

Hyperion IonCharge30 (15W)



Product Code: AIC30-15DC

The new Meech Hyperion IonCharge30 is part of the new IonCharge family of static generators from Meech that includes the compact IonCharge30 and the larger higher powered IonCharge50.

IonCharge30 is designed for use across a range of common applications including pinning, bag making and card insertion. It uses advanced high voltage technology and software for a controlled static charge via our range of static generator bars and pinning heads. The static charge can be either positive or negative (model dependant) and is used to impart temporary bonding between materials, at least one of which is insulative.

The IonCharge30 provides independently selectable voltage and current and the inclusion of a colour touchscreen interface provides simple adjustment and clear display of settings.

The functionality and simple adjustment and control of the output voltage and current means that the IonCharge30 is extremely versatile and effective for a range of applications and materials.

Features

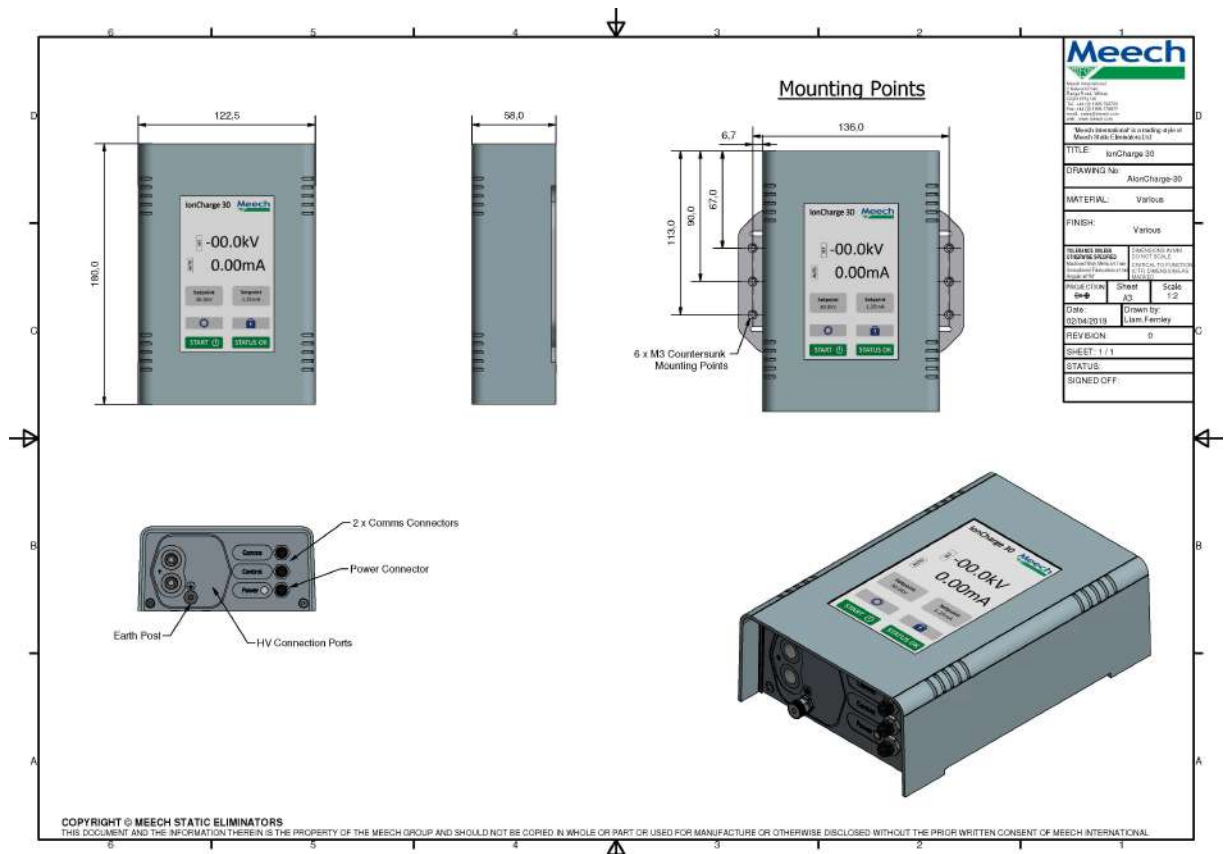
Benefits

15 Watt Power Output	Providing range for voltage (0-30kV) and current (0-0.5mA). Therefore, performance can be optimised for a variety of applications and maximum pinning effect can be achieved without risk of overload.
Hyperion 24V DC Power Supply	24V DC power is often the preferred power supply for use with industrial equipment for several reasons including safety, reliability, ease of installation.
Independently Selectable Voltage and Current	Increased control across a range of applications and material types.
Perforation and Hole Detection	Built-in perforation and hole detection functionality for use in applications such as the manufacture of plastic bags. IonCharge30 can be setup for spark detection when used with a high voltage electrode (hot bar). Sparks detected are output as a pulse signal to a PLC for counting and activating other machine functions.
Multi-Language Support	IonCharge30 supports multi-language displays in English, Mandarin, French, German, Italian and Spanish.
Colour Touch Screen User Interface	Clear and intuitive information display and simple input of settings.
Auto Trip on Detection of 'Flashover'	Reduces the risk of damage to equipment and/or materials being processed.
SmartControl Connectivity	When connected to a SmartControl unit there are the benefits of remote monitoring and control.
Optional external connectivity to industrial networks	Versatile connectivity for integration with existing PLC compatible industrial networks for monitoring and control.
Remote On/Off Input	Unit can be switched on and off in association with machine operation for process integration.
Compact and Lightweight	Provides flexibility in positioning.
Twin High Voltage Outputs	Multiple generator bars can be connected. Additional bars can be connected using optional adapter. NOTE: HV output socket requires accessories with a short plug connector, as used on the 994CG.

Product shown in this document may be covered by one or more patents, patents applied for and/or registered designs and/or trade marks. For further information please refer to our Head Office or visit www.meech.com.

Technical Characteristics

Max Output Power	15W
Supply Voltage	24V DC
Max Power Consumption	30W
Input Connection	M8 4 Pole
Output Voltage	0 - 30kV
Output Current	0 - 0.5mA
Output Polarity	Negative or positive variants available
Voltage and Current Selection	Independently selectable voltage and current
Adjustable Increments	Voltage (V) 0.1kV Current (I) 0.01mA
Perforation and Hole Detection	Minimum output pulse duration 15ms. Detection frequency upto 30Hz (upto 1800 pulses per minute)
Industrial Ethernet Network Connectivity	Optional external module for integration of IonCharge30 to industrial Ethernet based networks including Profinet-IRT, Modbus TCP, Ethernet/IP
User Interface	5" Touch screen
4-20mA Control	Independent voltage and current inputs. Input resistance 1k Ω
HT Output	2x Meech 30kV connection ports
Password Protection	2 level, screen and adjustment lock
Operating Environment	Industrial
Protection Class	IP20
Dimensions (W x D x H)	122.5 x 180 x 58 mm
Weight	0.75 kg
Housing Material	ABS



Product shown in this document may be covered by one or more patents, patents applied for and/or registered designs and/or trade marks. For further information please refer to our Head Office or visit www.meech.com.